

# COTTON CANDY MACHINE

## SET-UP AND GENERAL OPERATION INSTRUCTIONS

1. Loosen 2 motor transportation nuts on top of machine so that floss head is free to run.
2. Using the 5 metal clips supplied place the plastic mesh around the inside of the floss pan. Place floss pan onto top of machine.
3. Plug machine directly into a 120 Volt **GROUND**ED power circuit.

**WARNING!** DO NOT USE AN EXTENSION CORD! UNIT MUST BE USED ONLY WITH DIRECT POWER! USE OF AN EXTENSION CORD WILL RESULT IN PERMANENT DAMAGE TO THE HEATING ELEMENTS!

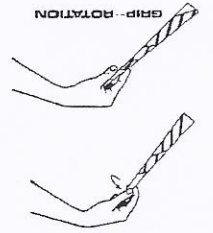
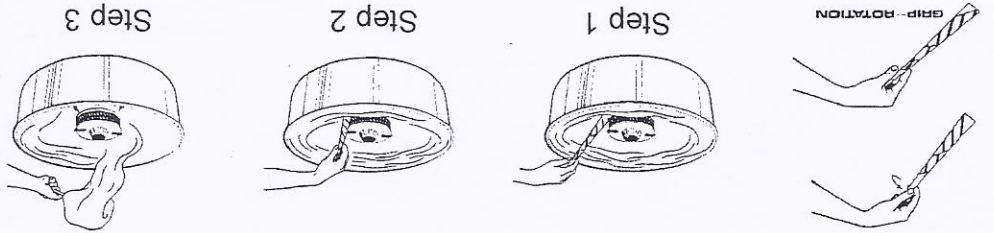
4. BEFORE TURNING MOTOR ON fill floss head about 90% full with sugar floss (DO NOT OVER FILL). Turn Main (Motor) switch to ON - then Heat switch to ON. Whenever you add sugar floss to the floss head, always fill it about 90% full.

**DO NOT ADD SUGAR FLOSS WHILE MOTOR IS RUNNING!**

5. When first beginning adjust heat range knob to about half position then increase until cotton candy begins to gather around inside of floss pan. (Turning knob to right increases temperature.) If smoke appears from top of unit reduce heat by turning heat range knob to the left until it no longer smokes. (Smoke is a sign that the heat range is set to high and is burning the sugar floss mix.)
6. Once you find the ideal setting for the production of cotton candy, you should be able to operate at this position for all of your event.
7. **When finished making floss for the day or the event:** Remove the floss pan and wash the pan, plastic mesh and holders in warm soapy water. **DO NOT WASH OR MOISTEN FLOSS HEAD!**
8. **BEFORE transporting the machine:** Tighten the 2 motor mounts you loosened in step 1 so that floss head is not free to move around.

## Cone Making Procedure

Grip cone as shown below. Break into web of floss with cone (Step 1). Follow the simple cone making steps shown below. Lift web of floss from pan and roll into cone. (If you experience difficulty in getting the floss to stick to the cone, pass the cone lightly over a damp sponge. One pass over the sponge should cause the floss to stick to the cone.) ALWAYS roll floss on the cone outside of the pan as shown in steps 3-6.



**CAUTION!!**  
**DO NOT ADD SUGAR FLOSS WHILE MOTOR IS RUNNING!**  
 Add cotton candy sugar floss only when motor is NOT running. Whenever you add additional sugar floss to the floss head, always fill it 90% full. If you will not be making cotton candy during a prolonged break be sure to turn Heat switch OFF.  
 You may also wish to turn Main switch OFF until you resume making cotton candy.



*We Bring The Party to You.*

5020 Nicholson Court

N. Bethesda, MD 20895

301-231-TENT (8368) - Office

www.4agrandevent.com

*Thank you for renting from*